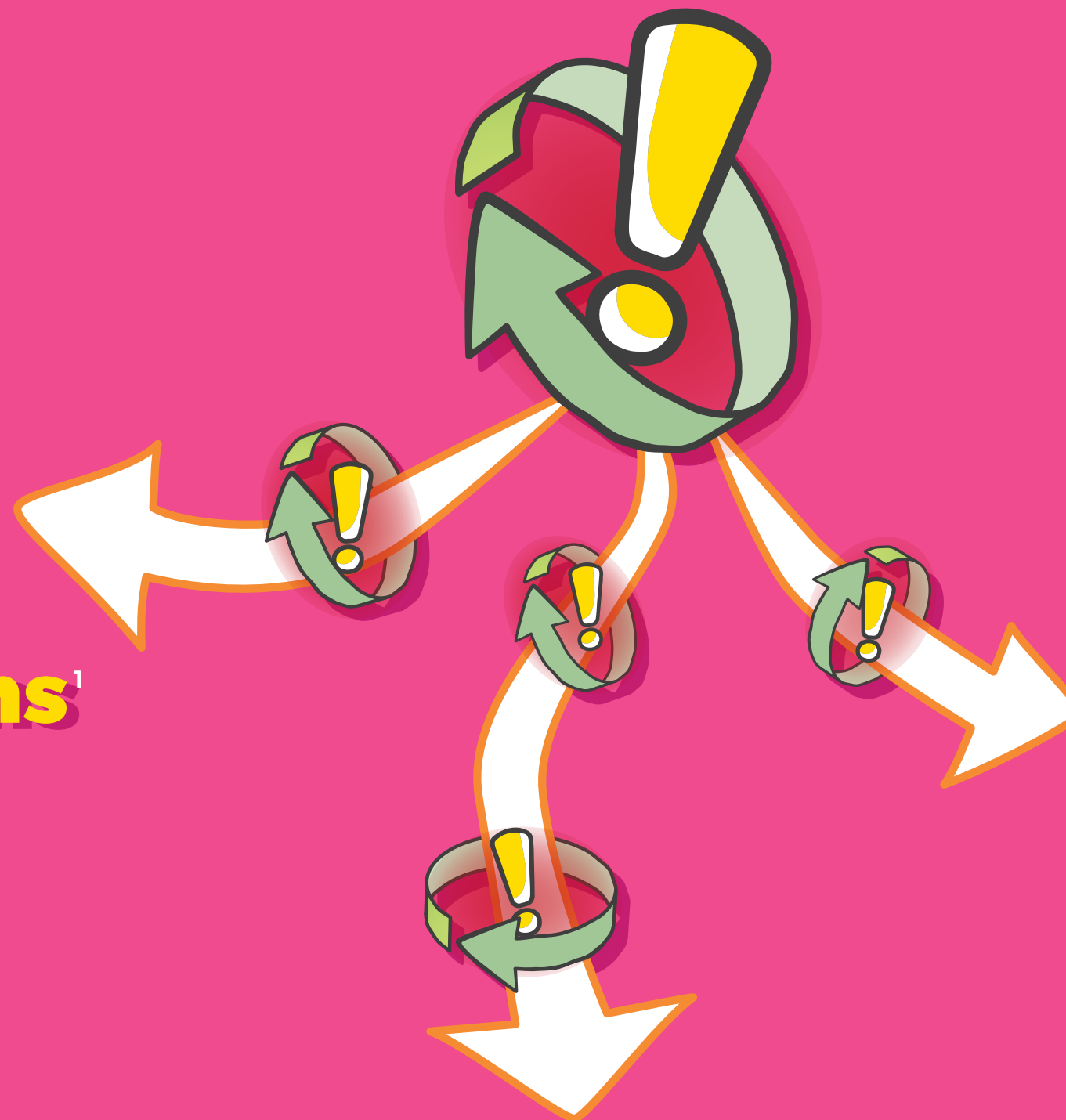


IMMEDIATE IMPACT OF FUNCTIONAL GASTROINTESTINAL DISORDERS

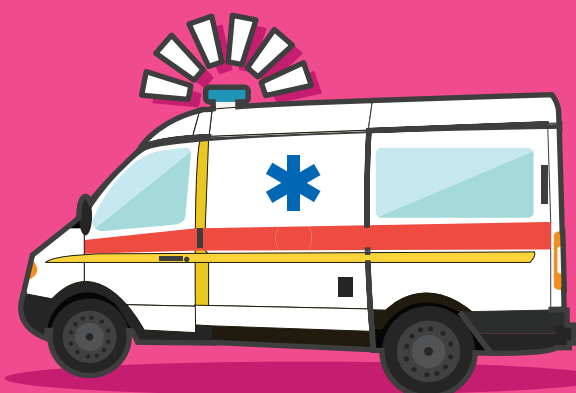


Feeding problems¹



Stress in family^{2,3}

Health-economic burden:



For acute constipation, infants have the highest rate of emergency hospital visits in US (average cost: US\$ 2,306/patient)⁴



Sleeping and crying problems account for £65 million health care costs in UK per year⁵

1. Miller-Loncar C, et al. *Arch Dis Child*, 89(10):908-12, 2004. 2. Vik T, et al. *Acta Paediatr*, 98(8):1344-8, 2009. 3. Akman I, et al. *Arch Dis Child*, 91(5):417-9, 2006. 4. Sommers T, et al. *Am J Gastroenterol*, 110(4):572-9, 2015. 5. Morris S. *Econ Hist Rev*, 54(3):525-45, 2001.