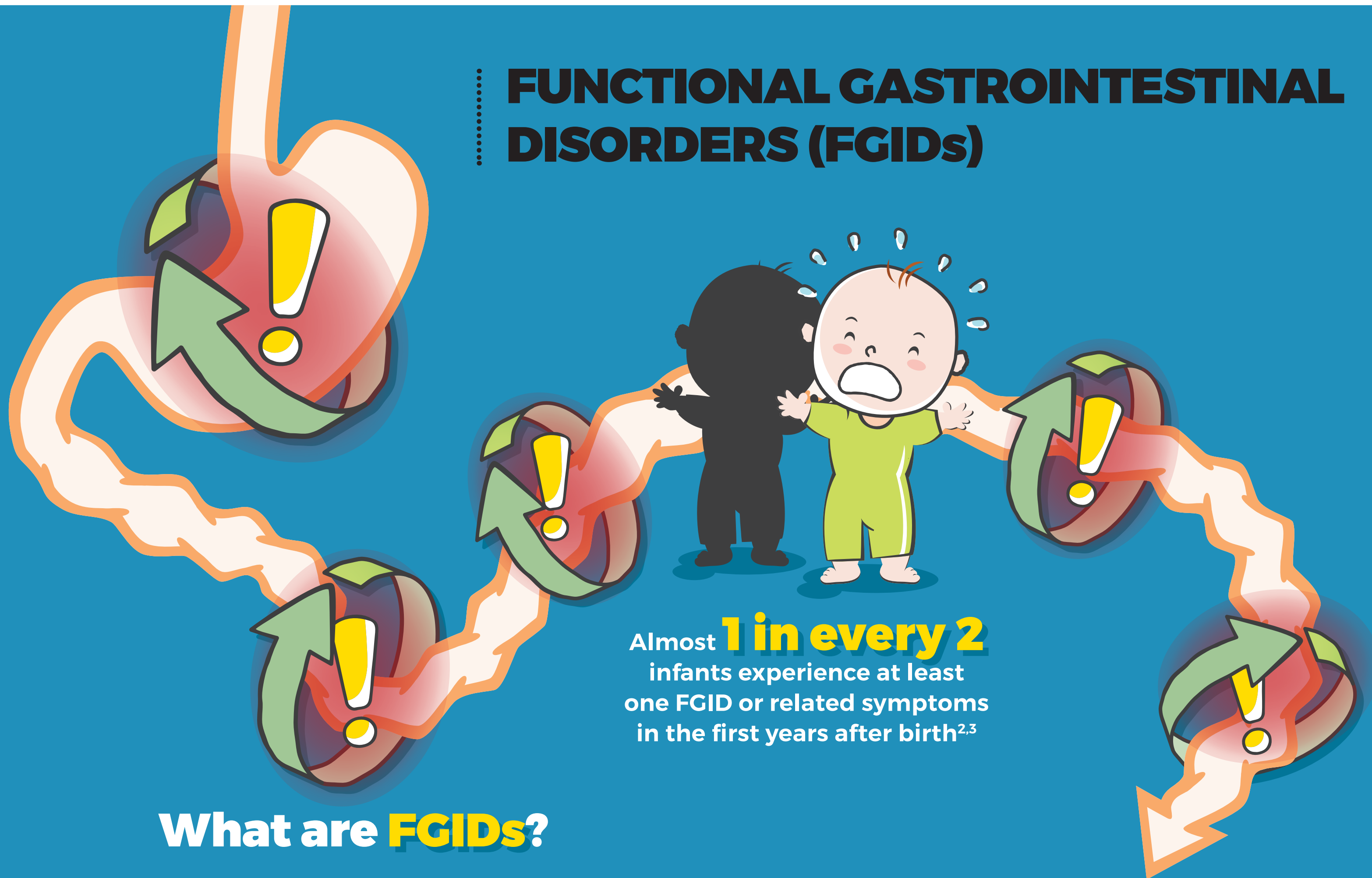


# FUNCTIONAL GASTROINTESTINAL DISORDERS (FGIDs)



Almost **1 in every 2** infants experience at least one FGID or related symptoms in the first years after birth<sup>2,3</sup>

## What are **FGIDs**?

FGIDs are gastrointestinal disorders that include **chronic or recurrent** symptoms that cannot be explained by obvious structural or biochemical abnormalities<sup>1</sup>

The most frequent FGIDs are<sup>3</sup>:

**30%** **20%** **15%**  
Regurgitation Infantile colic Constipation

<sup>1</sup>. Benninga MA, et al. *Gastroenterol*, 150(6):1443-55, 2016 <sup>2</sup>. Iacono G, et al. *Dig Liver Dis*, 37(6): 432-8, 2005. <sup>3</sup>. Vandenas Y, et al. *J Pediatr Gastroenterol Nutr*, 61(5): 531-7, 2015.